

22/225-231 Princes Highway Corrimal, NSW



2



1



1

Your chance to live or invest in the heart of Corrimal Village

Situated in the heart of Corrimal's vibrant village, this beautifully presented two-bedroom apartment will delight first-home buyers, downsizers, and astute investors. With stunning mountain views setting the perfect backdrop for relaxed modern living, every convenience at your fingertips, and your pick of beautiful beaches just moments from home, this is a fabulous lifestyle opportunity not to be missed.

Location

Ideally located smack bang in the middle of Corrimal Village, this instantly appealing home ensures a superbly convenient lifestyle and easy access to beaches, transport, and the city.

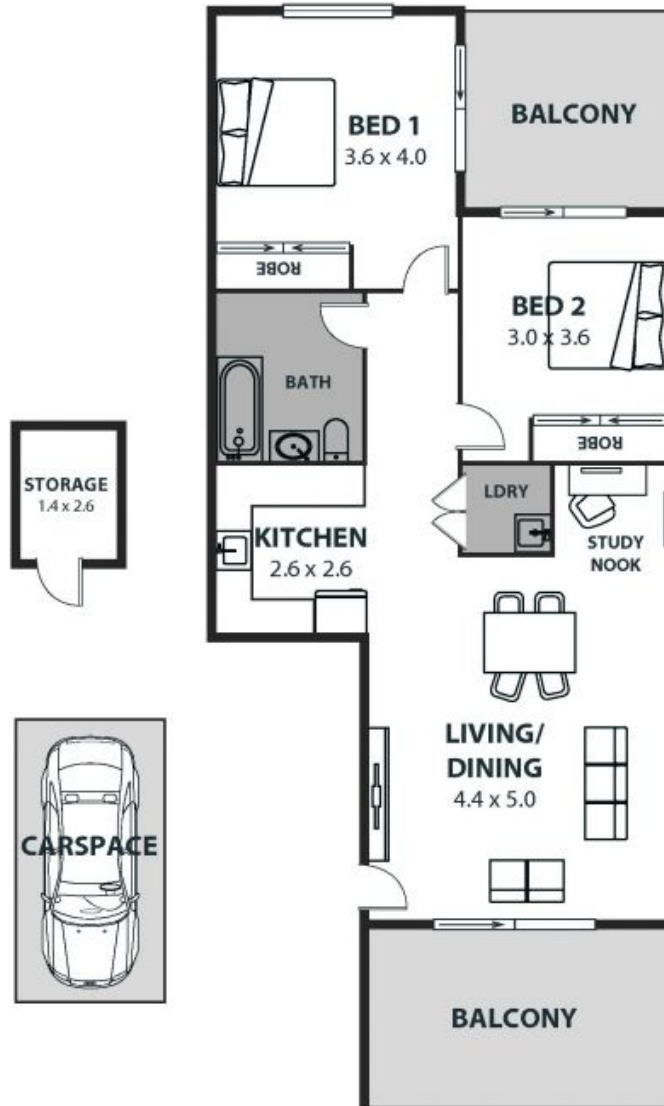
Step outside to be instantly immersed in the buzz of the village, with cafes and eateries to enjoy, a diverse selection of retailers and services, and a choice of supermarkets. Corrimal Park Mall and Corrimal Village Shopping Centre both await a three-minute walk from h

Price: \$560,000
Council Rates: \$354.10 p/q
Strata Rates: \$1,785.00 p/q

Adam McMahon

Ange Carrigan

02 4267 5377



22/225 Princes Highway, Corrimal

Internal Space 79m²



Plans shown are for presentation purposes and are not part of any legal document or title and are subject to errors, omissions, inaccuracies and should not be used as sole and accurate reference. Particulars given are for general information only and do not constitute any representation on the part of the vendor or agent. No liability will be accepted.